



Pathways to Adult Success

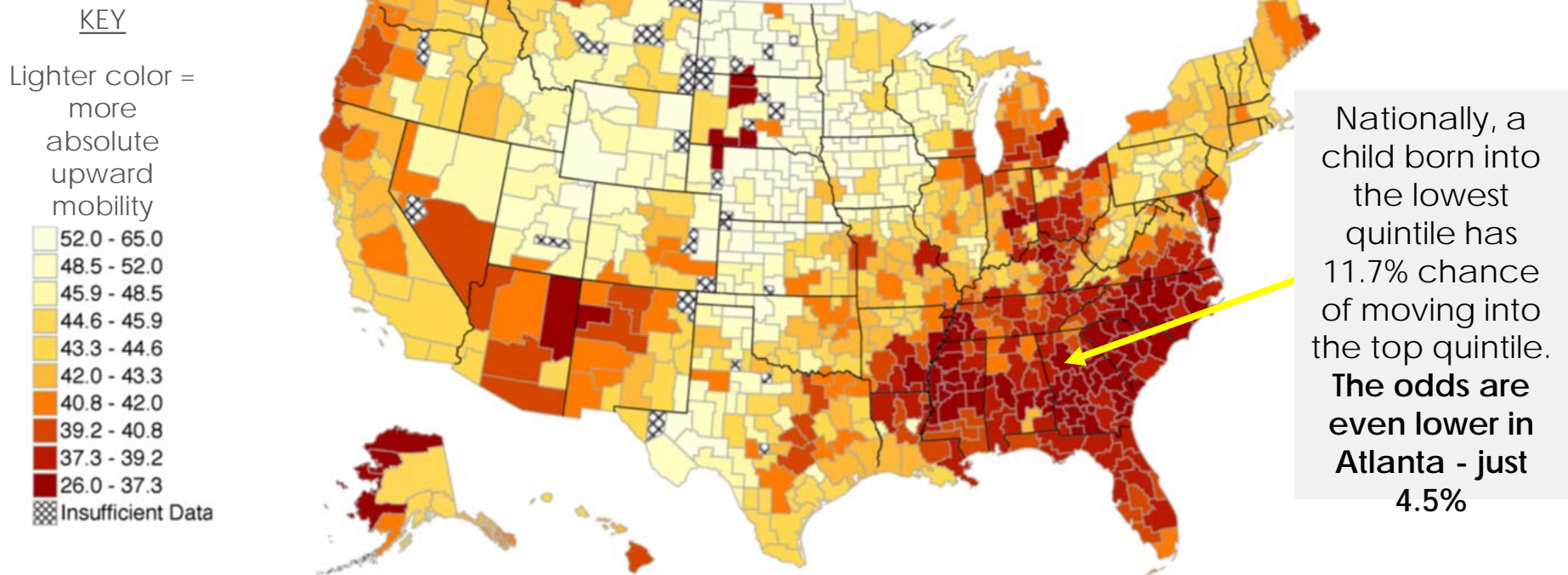
Femi Johnson, Senior Director, College Access
Achieve Atlanta

The background features two large, overlapping triangles pointing upwards. The triangles are filled with a dark blue color, and their overlapping creates a darker shade in the center. The overall background is a solid, slightly lighter blue.

Our Pathway to Adult Success

Atlanta has one of the country's lowest rates of social mobility, with implications for equitable life outcomes.

Absolute upward mobility: mean child rank for parents at 25th percentile

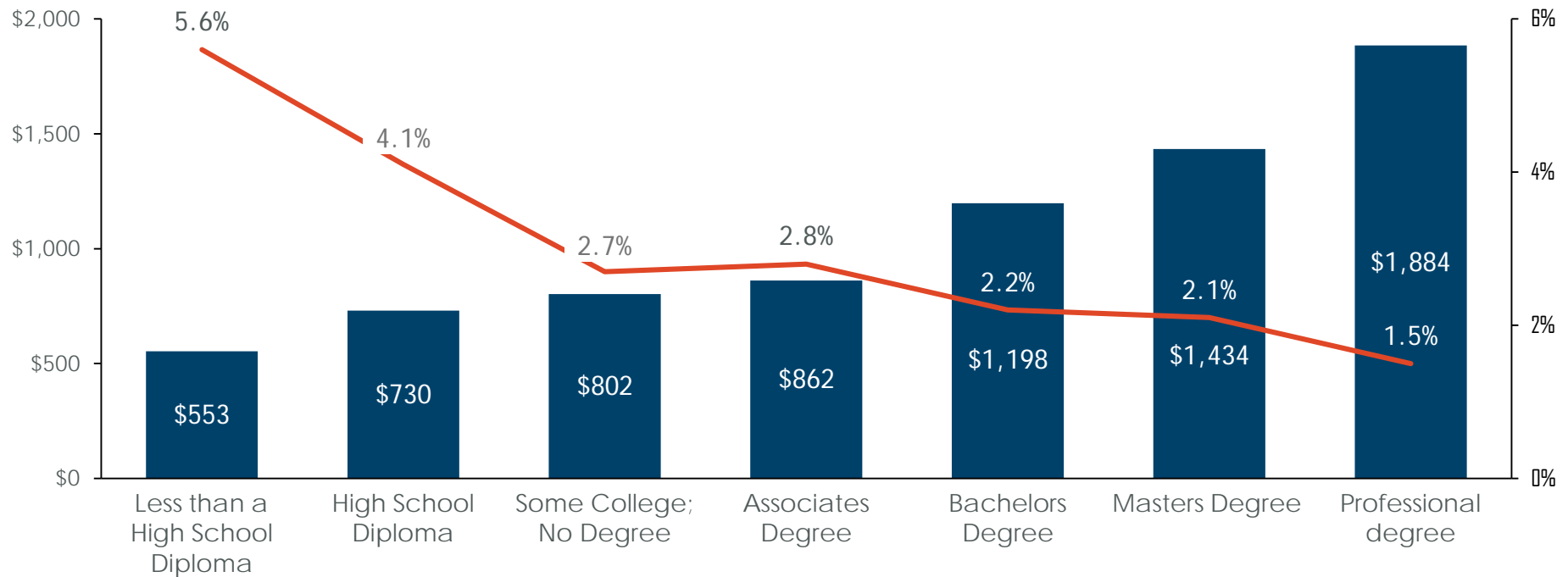


Low social mobility means that children born into families with lower income have little chance of achieving income level of higher quintiles as adults

Postsecondary degree attainment is an important driver of upward social mobility.

Unemployment rate and mean weekly earnings by educational attainment¹

— Unemployment rate
■ Mean weekly earnings



A college education **dramatically increases likelihood of employment and income level**; this is true for elite colleges, other 4-year institutions, and community colleges²

1. <https://www.bls.gov/emp/chart-unemployment-earnings-education.html>

2. <https://www.brookings.edu/blog/social-mobility-memos/2018/01/11/raj-chetty-in-14-charts-big-findings-on-opportunity-and-mobility-we-should-know/>



Vision

Atlanta is a city where race and income no longer predict postsecondary success and upward mobility

Mission

Achieve Atlanta's mission is to help APS students access, afford, and earn postsecondary credentials

Achieve Atlanta builds cross-sector collaboration across a range of partners.

Grades 11-12

Postsecondary

Improve Postsecondary
Access

Improve Postsecondary
Affordability

Increase Postsecondary
Success

Achieve Atlanta catalyzes and facilitates results-driven cross-sector collaboration

by setting the vision, assembling teams, and creating conditions for success



Provide college advising to help students identify and access chosen postsecondary education



Help students understand the benefits and value of postsecondary education and help them pay for it through scholarships



11 Higher Education Institutions



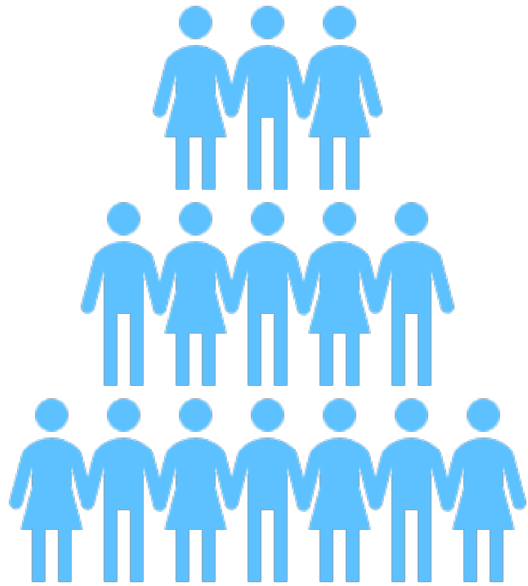
Provide supports to help students persist and complete degrees



Achieve Atlanta engages students and families to ensure their experience and feedback inform how supports and services are provided and improved

Our FAFSA Completion Strategy

We pivoted our strategy to focus on FAFSA support, in response to changing district and national context.



Senior leadership changes at the district level



Delayed launch and complications with the "Better FAFSA"

Our multi-tiered approach to FAFSA completion support included organizational and department changes.



Adjustments to
Scholarship
Policies and
Procedures



Emphasis on
Marketing and
Communication



Increased
Summer Melt
Supports and
Capacity



Improved
Progress
Monitoring and
Dashboards



Intentional Data-
sharing Across
Partners

Data-sharing was key for APS' FAFSA completion outpacing national and state averages.



47% of seniors in GA

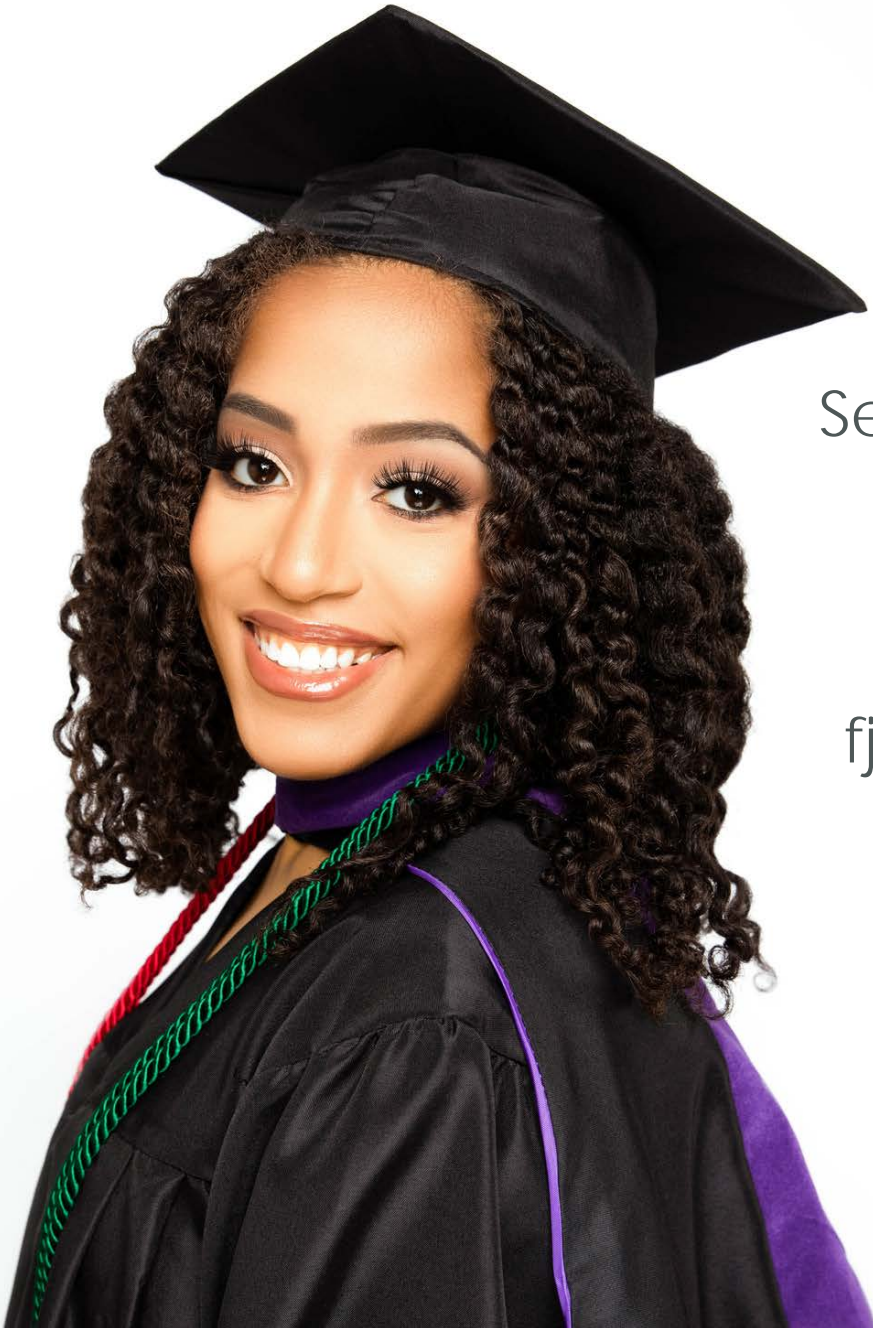


65% of seniors in APS



48% of seniors in GA

Thank You!



Femi Johnson
Senior Director, College Access
Achieve Atlanta

fjohnson@achieveatlanta.org