

How Early Warning, On-Track, and MTSS Systems Can Be Adapted and Used to Support the Successful Return of Students in the Fall

Robert Balfanz

Everyone Graduates Center
Johns Hopkins University School of Education

May 19, 2020

Welcome and Today's Agenda

Continue the collective solution-sharing by hearing how

- Riverside County Office of Education
College and Career Readiness Unit,
California
- Chattanooga Public Education Foundation
(PEF) and Hamilton County Department of
Education
- Denver Scholarship Foundation and Denver
Public Schools

are responding and supporting students
and schools.

ORGANIZING OUR DISCUSSION

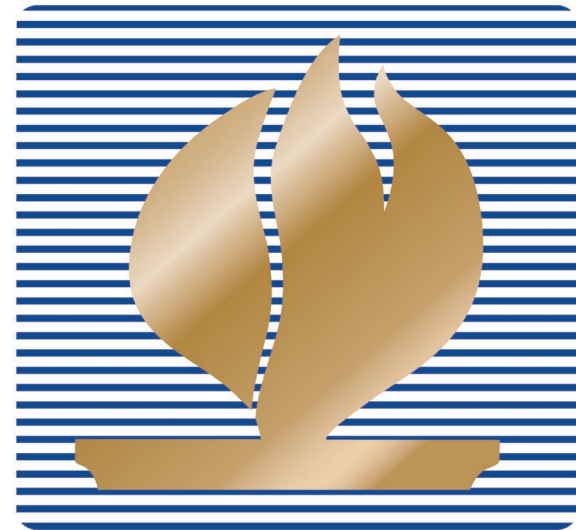
- We have a large and diverse group of people and organizations participating in today's call
 - K-12, Higher Ed, Non-Profits, State Dept. of Ed.
- So we can hear from as many as possible, we have muted everyone upon entry. Please share ideas and ask questions via the chat function.
 - One of the moderators will read each question or comment out loud, and then ask for responses via the chat function
 - The moderator may ask the participant to respond verbally for elaboration or clarification
 - If you are sharing a resource that can be reached via a web link, please share the link in the chat box
 - After the call, we will send out a follow-up email listing resources shared during the session and add to the COVID-19 resource webpage on the PAS website

College and Career Readiness

Division of Educational Services

Master Schedule Training – Session 2A

Milestone #3 – Course Request



**RIVERSIDE COUNTY
OFFICE OF EDUCATION**

JUDY D. WHITE, Ed.D.
County Superintendent of Schools



Catalina Cifuentes
Executive Director
ccifuentes@rcoe.us



Gil Compton
Director I
gcompton@rcoe.us



Dr. Pedro Caro
Coordinator
pcaro@rcoe.us

On-The-Go Webinar Series



SCHOOL COUNSELOR
LEADERSHIP NETWORK
R I V E R S I D E C O U N T Y

ON-THE-GO WEBINAR SERIES

REGISTER NOW @ RCEC.US/ON-THE-GO



- Free weekly webinar series launched on April 7th
- One hour presentations offered 3x per week
- High priority topics
- Led by local and national experts
- 200 – 600 participants each session
- Riverside County Education Collaborative link: www.rcec.us



Session Topics

- I'm a Virtual School Counselor . . . Now What?
- Virtual Resources You Can Use Today
- A District and Comprehensive Approach to Distance/Virtual School Counseling
- Best Practices for Virtual Counseling, from Creating a Plan to Ensuring Your Ethical Responsibility

RCOE and Growing Inland Achievement Technology Support Partnership

GIA, inlandempiregia.org/covid-19-response, Grant (\$50,000) to support student technology needs for taking Advanced Placement (AP) Exams.

Digital devices and internet connection to support 48,759 AP tests ordered in Riverside County.

GIA and RCOE are also partnering to support a new Magnify the Middle (School) Project with Gates Foundation funding.

We're In This Together
A Collection of Resources for Inland Empire Students and Families Amidst COVID-19

[SPEAK WITH AN ADVISOR](#) [UPCOMING INFO SESSIONS](#)

Technology Assistance
Inland Empire educational institutions are offering programs to help students gain access to the technology they need to learn and study from home. If you are in need of technology assistance click the link below to learn more.

[TECHNOLOGY RESOURCES](#)

Class of 2020
We understand that you may feel uncertainty about a variety of things including your college acceptance, grades financial aid, testing, and more. We're here to help.

[LEARN MORE](#)

College Success Advice
In collaboration with educational partners across the Inland Empire, a number of College Success Advisors are now available to help you navigate the next steps on your educational journey. Click the button below to get connected.

[CONNECT WITH AN ADVISOR](#)

Riverside County Public Schools Data Sharing Agreement

- 23 school districts across Riverside County covering 430,000 students
- Has been in place for over five years
- Includes protected and secure student demographic information, California assessment and accountability data, National Student Clearinghouse data, and College Board AP performance data
- Allows RCOE to support schools and districts with powerful data reports and analysis
- Provides RCOE the opportunity to partner with districts in meaningful and value-added ways



Hamilton County, TN's COVID-19 Response Insight

Dr. Michelle Caldwell, Director of Student Success, Public Education Foundation
Ms. Sarah Malone, Lead College and Career Advisor, Hamilton County Department of Education
Dr. Keith White, Director of Research and Effectiveness, Public Education Foundation

Context / Approach / Data

- Southeastern TN public school district with 46,000 students from suburban, rural, and metropolitan locations (mid-size, river city with many different community types around it)
- Hamilton County public schools have been closed since March 16 – transitioned to “online” learning
- While embracing the gravity of this historic event, we have also used it, since we are part of the BMGF P-16 Learning Community, to highlight systemic challenges that existed for students, educators, and communities prior to COVID-19

Data

- PEF (recognized as a School Official) and Hamilton County Schools have used student data and predictive dashboards to:
 - Dashboards enabled us to create a list of students predicted to be on-track for first-year postsecondary success, almost ready for first-year postsecondary success, and underprepared for first-year postsecondary success based on GPA, pre-COVID-19 Behavioral Infractions, and School Attendance, as well as cumulative ACT scores
 - Our “match and fit” dashboard, using estimated chance of postsecondary success based in IPEDS information, is available to College and Career Advisors and College Advancement Mentors to assist in finding alternate, good-fit options for students
 - PEF has provided current and historic data including lists of postsecondary sites most frequently attended by Hamilton County students from all high schools and our most challenged high schools

District Response: College and Career Advisors

- As support staff, advisors assisted with the school care teams in checking on students' well being and accessibility to virtual learning options.
- Advisors pivoted to virtual advisement once all seniors in county were connected with affordable or free internet and a device (Chromebook) from the district. The team created a shared Google Doc in posting any changes and new key dates and procedures for the group to easily stay connected and up to date.
- Team meetings moved from monthly to 2x per week to address the quickly-evolving college admissions landscape, post COVID-19, and support our students.
- Contingency planning became commonplace once the state declared we would not return to school buildings, specifically in recognition and submissions of documentation for admissions and financial aid.
- All sessions that would have been held "at school" or "during school hours" shifted to online options, such as virtual college tours and fairs, financial aid sessions, college knowledge sessions and pre-orientation and signing days. This amped up quickly through intensive collaboration with CBOs and advisors.
- The district created a landing page for the class of 2020, where parents and families can access update information and resources.

College Advancement Mentors

- Assisted students in moving out of residence halls.
- Connected students with community resources (internet providers) and college/university resources (technology, cupboard, online tutoring, etc.) as they quickly transitioned from face-to-face to online courses.
- Shared tips for online learning with students to support their transition.
- Through the Student Assistance Fund, paid utility bills as many students and their parents have lost jobs or had hours significantly reduced.
- Worked with College & Career Advisors to coordinate virtual sessions with the top colleges/universities attended by HCS students.





QUESTIONS?

Contact:

kwhite@pefchattanooga.org / 423-774-4631



Partnering for Student Success: DPS and DSF



April 28, 2020

Partnering for Student Success

Presenters

Katie Gianatasio, DPS
College Access Initiatives Manager



Gabe Guindon, DSF
Director of College Access



Partnering for Student Success

Agenda

- DPS & DSF Partnership
- Coordination with College Partners
- Connecting Virtually: Strategies that Work





Partnering for Student Success

DPS & DSF

- In School & On the Ground
- Higher Level Partnership

DSF and DPS have
partnered to support
student success since
2006.

Partnering for Student Success

Coordination with College Partners

- DEAN (Denver Education Access Network)
- Collaboration with Admissions and Financial Aid
- DPS Red Carpet Day Orientations and Leading Change



Impactful partnerships
between secondary and
post-secondary
educators creates
results!

Partnering for Student Success

Connecting Virtually: Strategies That Work

- Counselors, College Advisors, Teachers & Administrators
- Google Meets/Voice, Schoology, Text Platforms
- Family and Community Partners
- Appropriate Alternative Methods



Gabe Guindon

gguindon@denverscholarship.org

Katie Gianatasio

Katie_Gianatasio@dpsk12.org



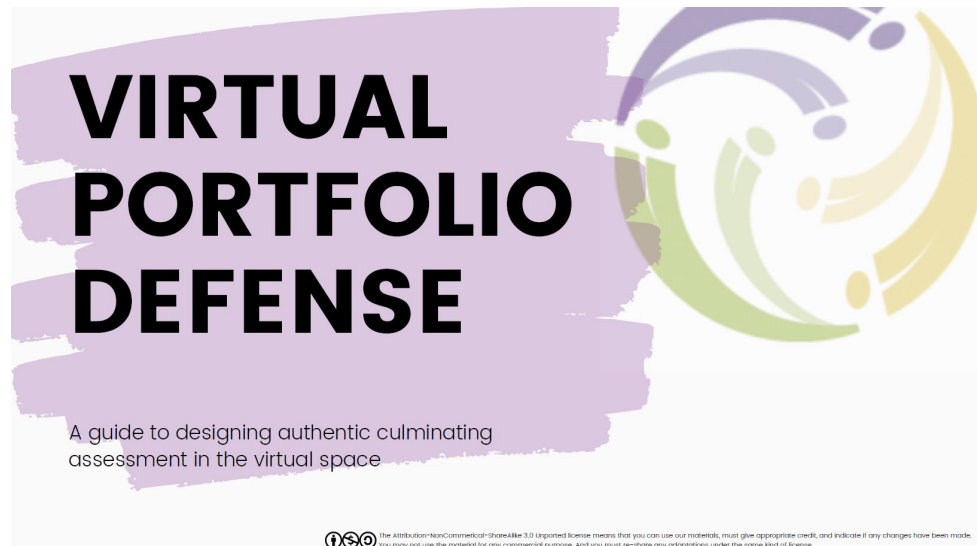
SUPPORTING SENIORS DURING COVID-19

ADDITIONAL RESOURCES



Virtual Planning Tool

- Envision Learning Partners Virtual Portfolio Defense
 - A guide to designing authentic culminating assessment in the virtual space
 - <https://envisionlearning.org/announcing-elps-virtual-portfolio-defense-toolkit/>



Steps for Supporting Seniors

- National College Attainment Network, <https://www.ncan.org/>, published a guide on next steps to help high school seniors transition to a 2-/4-year college or certificate program: https://cdn.ymaws.com/www.ncan.org/resource/resmgr/publications/ncan_stepstopostsecondary.pdf



IMMEDIATE NEXT STEPS FOR HELPING HIGH SCHOOL SENIORS TRANSITION TO A 2-/4-YEAR COLLEGE OR CERTIFICATE PROGRAM

5 Actions for Districts and Schools to Take *Right Now*

 **PATHWAYS to
ADULT SUCCESS**

 **JOHNS HOPKINS**
SCHOOL of EDUCATION

The National College Attainment Network (NCAN) is a membership association that, for 25 years, has focused exclusively on empowering communities to help more students of color and students from

Return to School Roadmap

- A roadmap of essential actions to help district and school leaders plan and implement a safe, efficient, and equitable return to school:
<https://returntoschoolroadmap.org/postsecondary/district/>

Return to School Roadmap

AN OPPORTUNITY LABS INITIATIVE

The Roadmap About Us



Postsecondary

Essential actions to keep students on track to postsecondary success



District Leaders

Do First

- **Set an ambitious goal to maximize the percentage of the Class of 2020 that seamlessly enroll in a strong postsecondary pathway by Labor Day.** This goal is often measured in two ways:
 - The number of students that actually enroll in a postsecondary pathway in the fall divided by the number of graduating seniors.
 - The estimated postsecondary completion (EPSC) rate of the class as a whole which is calculated by using historical *subgroup* graduation data of each individual institution/pathway. [See here](#) for how The Bill & Melinda Gates Foundation calculates EPSC.

 **PATHWAYS to
ADULT SUCCESS**

 **JOHNS HOPKINS**
SCHOOL of EDUCATION

SREB Counselor Webinars

Series of Webinars hosted by SREB (Southern Regional Education Board) on providing school counseling remotely during COVID-19 with advice from and Q & A with current practitioners, as well as webinar where college admission director provides updates and advice to high school counselors on college admissions during COVID-19

- School Counseling from a Distance:
<https://www.sreb.org/webinar/school-counseling-distance>
 - Webinar follow-up:
<https://www.sreb.org/webinar/webinar-follow-school-counseling-distance>
- What Admissions Professionals Want You to Know:
<https://www.sreb.org/webinar/what-admissions-professionals-want-you-know>

OTHER LEARNINGS OR RESOURCES TO SHARE

IN CONCLUSION

- Send your follow-up ideas and thoughts to rbalfanz@jhu.edu and jhfox@jhu.edu
- We will send out:
 - a recording of the session
 - a copy of the slides
 - a list of references and materials shared today
- If you would like an attendee list, please email info@pathwaystoadultsuccess.org
- Be well, thank you, and onwards