



# Robert F. Kennedy Farm to School Program

Program Manager: Zia Martinez  
RFK Director: Robert Baade

# Robert F. Kennedy Mission Statement

RFK Charter School prepares, motivates, and supports students to achieve their college and career goals in partnership with their families and the community





# About the project

The Farm to School program is in partnership with the Youth Conservation Corps (YCC) to provide a on the job training and various career pathways through workshops and field experience.

# Brief Description

This YCC internship gives students on the job training in traditional farming. Where they will have access to additional programs in welding, apothecary education, beekeeping, drivers ED, mural application, nutrition and culinary arts. YCC members will have the opportunity to participate in multiple field trips across Albuquerque, New Mexico to different farm and garden locations. The goal of this program is to broaden interns career pathways, while strengthening community and cultural knowledge on our food systems.



# What is Traditional Farming?

Traditional Farming is the practice of strengthening ecosystems and biodiversity to increase soil and land function through organic means.

The background image shows three young men standing on a metal grate walkway that runs alongside a muddy brown acequia (ditch). The man on the left is wearing a black t-shirt and dark pants. The man in the middle is wearing a light gray t-shirt and dark pants. The man on the right is wearing a blue t-shirt, blue shorts, a blue baseball cap, and a necklace. They are all looking down at the water. The ditch is filled with muddy brown water and is bordered by a concrete wall on the right. In the background, there are green trees and a clear blue sky with a few white clouds. A solid green rectangular block is in the top right corner of the image.

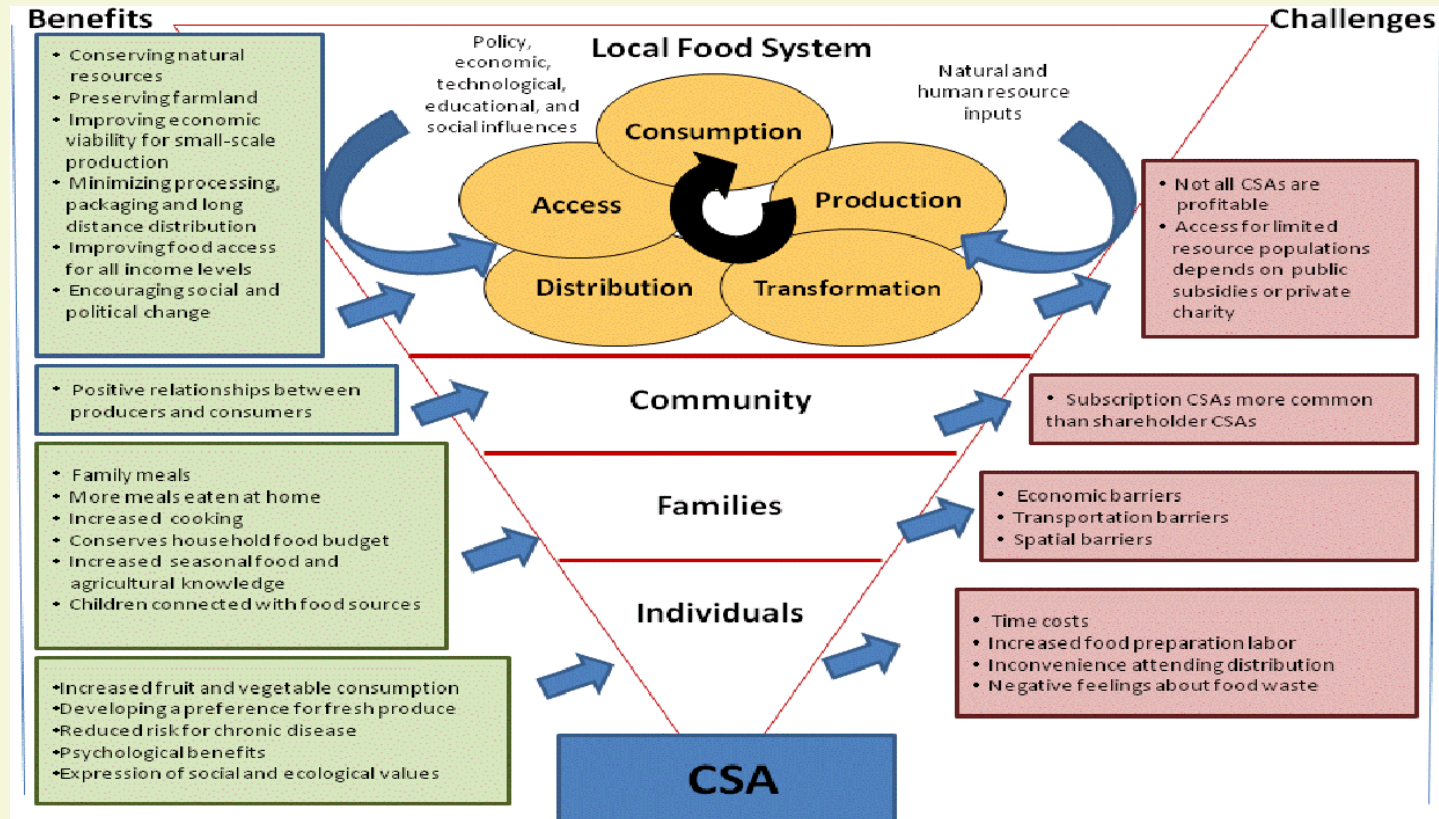
# ACEQUIAS

Traditional in New Mexico, crops are watered using acequias. Which are intricate ditch systems spanning across NM that flows water from the Rio Grande River to farmlands.

Our main  
location is  
Shadyside  
Farm

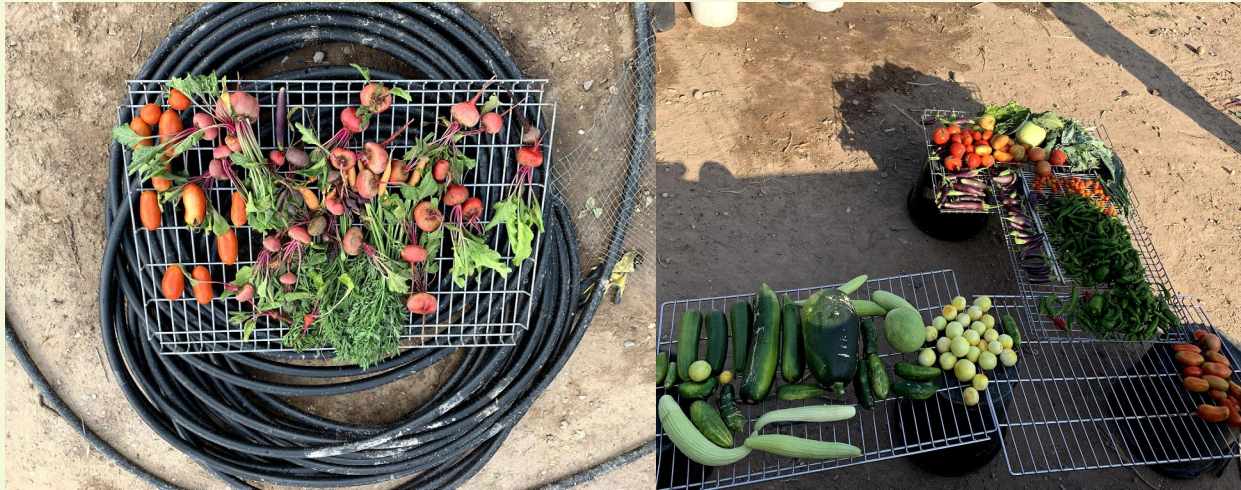


# Community Supported Agriculture (CSA)



# Donation Based CSA

All our food will be donated to community partners to provide underserved community with access to organic produce.



# What programs do we offer?

Drivers ED



Culinary  
Arts



# Beekeeping

RFK is partnered with Desert Hives to give a 10 class course on how to ethically care for honey bees.

We have 8 hives on site for students to receive hands on instruction.

Core members entering and observing hives



End of the season honey harvest



Newly certified beekeepers, 2021



# Traditional Medicine- Food & Nutrition

Students will receive Lectures and practicum on food, herb and bodily benefits that come from the types of food we consume.

This is possible through a 10 class course, given by practitioners from Phytotherapy by Sonia Massoco.

Mammoth sunflower



White sage transplant



# Mural Project

Interns will have the opportunity to participate in a mural project focused around Gun Violence awareness.

RFK Middle school, student project, 2021



RFK High School, student project, 2019



# Welding & Blacksmithing

Students will work with Guns to Gardens to recycle dismantled guns to build a mural frame and art piece to bring awareness to gun violence.

They will also learn the basics of blacksmithing to recycle gun parts into gardening tools



# Southwest Educational Partners for Training (SWEPT)

SWEPT gained a YCC internship that is designed to compliment RFK's internship. Allowing students to continue education longer into the season and allows RFK to reach further into supporting community youth.

# Community Partners are Key!

Field trips and presentations are hosted by:

- Indigenous Farm hub
- Project Feed the Hood
- East Central Ministry (ECM)
- Cornelio Candelaria Organics
- New Mexico Acequia Association (NMAA)
- New Mexico Beekeeping Association
- National Society of Black Engineers (NSBE)
- Organicos Food Hub
- The Haven Community Resource Center
- Sonia Masocco Phytotherapy
- Abuelas Medicina
- Rio Grande High School
- Southwest Organizing Project

# General Curriculum

## *Food Inc. :*

- Ideal Farm- Technology & Traditional Techniques
- History of Monsanto
- Biodiversity, Why is it Important?

## *The Garden:*

- Overview of South Central Farm
- Films connections to ABQ community struggles

## Additional Information:

- Earth's nutrients and our nutritional needs
- Foraging, Laws, and Connections
- Fungus!
- Soils Story: Group research assignment

## *Gather:*

- Vocabulary Sheet
- Food deserts, Food Sovereignty, personal power- poem

## Reflections:

- Starting reflection
- Empathy, importance to farming
- Micro-aggression, making a safer community culture
- Final reflection

The background of the slide is a photograph of a raspberry bush. The bush has green, serrated leaves and several clusters of red raspberries. Some raspberries are ripe and red, while others are still green and unripe. The image is partially covered by a semi-transparent green rectangular overlay that contains the text. The text is in a white, serif font and is centered on the slide. The overall composition is a close-up of the raspberry plant, with the text 'Questions?' prominently displayed in the center.

# Questions?

The background of the image is a collage of corn cobs and husks. The top and bottom sections show dried, yellowish-brown husks and cobs. The middle section is a solid green overlay with a faint, repeating pattern of green corn cobs. The text "Thank You!" is centered in the green area in a white serif font.

Thank You!